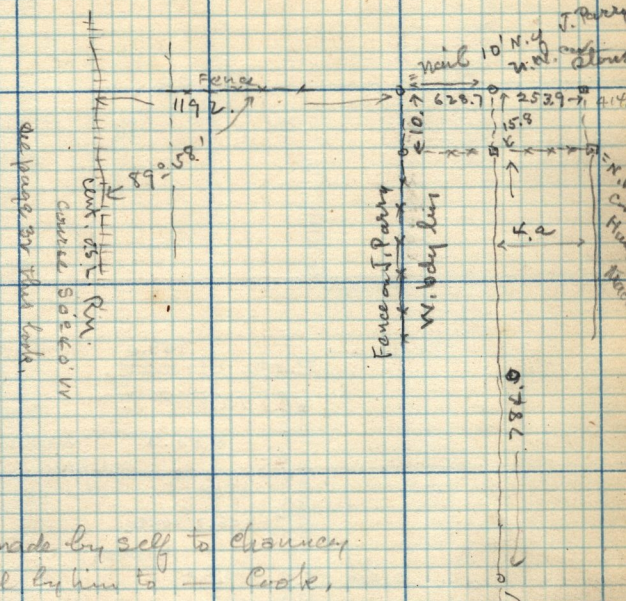


August 23-1903 - Survey of 4.2 and 1.5 a tracts in  
 Sec. 20, T 6-N - R. 1-W.

see page 147



Sept 1-1903 - Copy of description made by self to Chauncy Parry of land to be divided by him to Cook,  
 Part of Sec. 20, T6-N, R. 1-W, 331.0 ft S. & 122.1 ft W. of center of 91.0 W 1/4 Sec. 20, T 6-N - R. 1-W,  
 Traverse S 246.1 ft. thence East 48 ft.  
 to center of Slough. S 16° 30' W 260. ft -  
 S 60° 30' W 219. ft, S 89° E 175. ft, S 89° 22' W  
 108 ft. Thence N 784.5 ft to point. 257.4 ft. W. of Cray, and  
 on the S. line of Slough thence East 257.4 ft. to Cray,  
 containing 4. acres.

Traverse Table of above tract BC, at N. E. cor

	N.	S.	E.	W.
South		246.1		
East			48.0	
S 16° 30' W		219.5		24.8
S 89° E		173.2	24.3	
S 89° 22' W		1.2		108.0
N.	784.5			
E.			257.4	
S. 60° 30' W		178.0		126.3
	784.5	766.0	319.7	359.1
		766.0		329.7
	18.4			27.4